

WATER OPERATIONS SUMMARY FOR JUNE 2018

July 5, 2018

General Operations

During the month of June, the South Well operated for approximately 28 days, operating all 24 hours per day for most of these run days. The average flow rate was approximately 275 GPM and a total of 9.82 million gallons was delivered to the HEB irrigation pond. During the periodic shut offs, the static water level would recover from approximately 185 feet up to 310 feet. Recovery periods were short due to summer irrigation demands.

The North Well operated for approximately 28 days, operating all 24 hours per day for most of these run days. The average flow rate was approximately 160 GPM and a total of 5.50 million gallons was delivered to the HEB irrigation pond. During periodic shut offs when the well wasn't needed, the static water level would recover from approximately 160 feet to 300 feet. Recovery periods were short due to summer irrigation demands.

Action Items**Buchanan Tap**

Date	Status Update
6/29/2018	Showed up onsite at 9:00 A.M. to turn on and test the Buchanan Tap. Buchanan Tap was turned on at 9:00 A.M. and cranked up from 250 gpm to 600 gpm between 9:00 and 10:00 A.M. Buchanan Tap is to run until 3:30 P.M. today. Upon the first hydrant pressure tests, Joe from Aurora Water detected no differences in pressures due to running the Buchanan Tap. Received the green light late on Friday, from Bob Morphis, that HEB can run the Buchanan Tap at 600 gpm from 9:00 A.M. to 6:00 P.M. or at 300 gpm or less, 24 hours a day (when needed, as a last resort).
6/21/2018	Met at HEB early, around 7:00 A.M. to assist with backflow replacement and tuning of the Buchanan Tap valve with Roe. Replacement successful, test was a pass and sent to Victoria at Aurora Water. Attended HEB board meeting to help answer any questions the board had relating to water supply, sustainability, etc. Bob Morphis from Aurora Water called and said the Buchanan Tap is now approved for use from 9:00 A.M. to 6:00 P.M.; Aurora Water will test pressure soon.
6/13/2018	Determined that Buchanan Tap cannot be turned on until backflow valves have been checked and are working; test today showed damages due to freezing, fixes coming soon. Ordered backflow replacement through Backflow Consultants.

Charging of WISE Line and Fixing of Communications Issue

Date	Status Update
6/12/2018	ECCV line was shut off a day early per ECCV requirements due to high demand on their end. Was left unavailable to HEB for the remainder of June.
6/05/2018	Met at site at 8:10 A.M. with Chris Muller, Matt from Parker Water, and two men from Aurora Water (Steve and Bob). Charged WISE line and then opened it, throttling the flow back from about 380 GPM to 240 GPM. Showed men from Aurora Water the Buchanan tap, discussed its hookups and backflow prevention devices and agreed to continue communications on whether or not HEB and TZA need permission from Aurora Water should a future need arise.
6/01/2018	Significant communications issues regarding remote control of WISE line, worked with AM West and Parker Water in an attempt to fix this and get the WISE line charged.

Utility Notification Center of Colorado (UNCC)

In the month of June, TZA has responded to 91 utility locate tickets.

Water Usage

PLEASE NOTE: This section is current through July 5th, 2018. An updated draft will be sent once invoices are received for the month of November. Water Usage data is collected from invoices received from Xcel Energy and Aurora Water. For historical water usage, please refer to Table 1 as well as Figure 1 and Figure 2. For monthly water usage and billing for 2018, refer to Table 2.

Table 1 – Historic Annual Water Usage, to Date

Year	North Well		South Well		ECCV Line, Buchanan Tap, Aurora Pkwy Tap		Total
	kgal	%	kgal	%	kgal	%	kgal
2011	29,408	37	38,888	48	12,273	15	80,569
2012	25,416	28	55,493	61	10,368	11	91,277
2013	26,223	38	38,791	55	4,982	7	69,996
2014	18,472	33	33,808	60	4,036	7	56,316
2015	20,510	30	37,999	57	8,650	13	67,159
2016	21,569	25	55,478	63	10,824	12	87,871
2017	21,277	31	33,884	49	14,097	20	69,258
2018	8,812	24	24,472	67	3,427	9	36,711
Average (2010-2017)	23,268	32	42,049	56	9,319	12	74,635

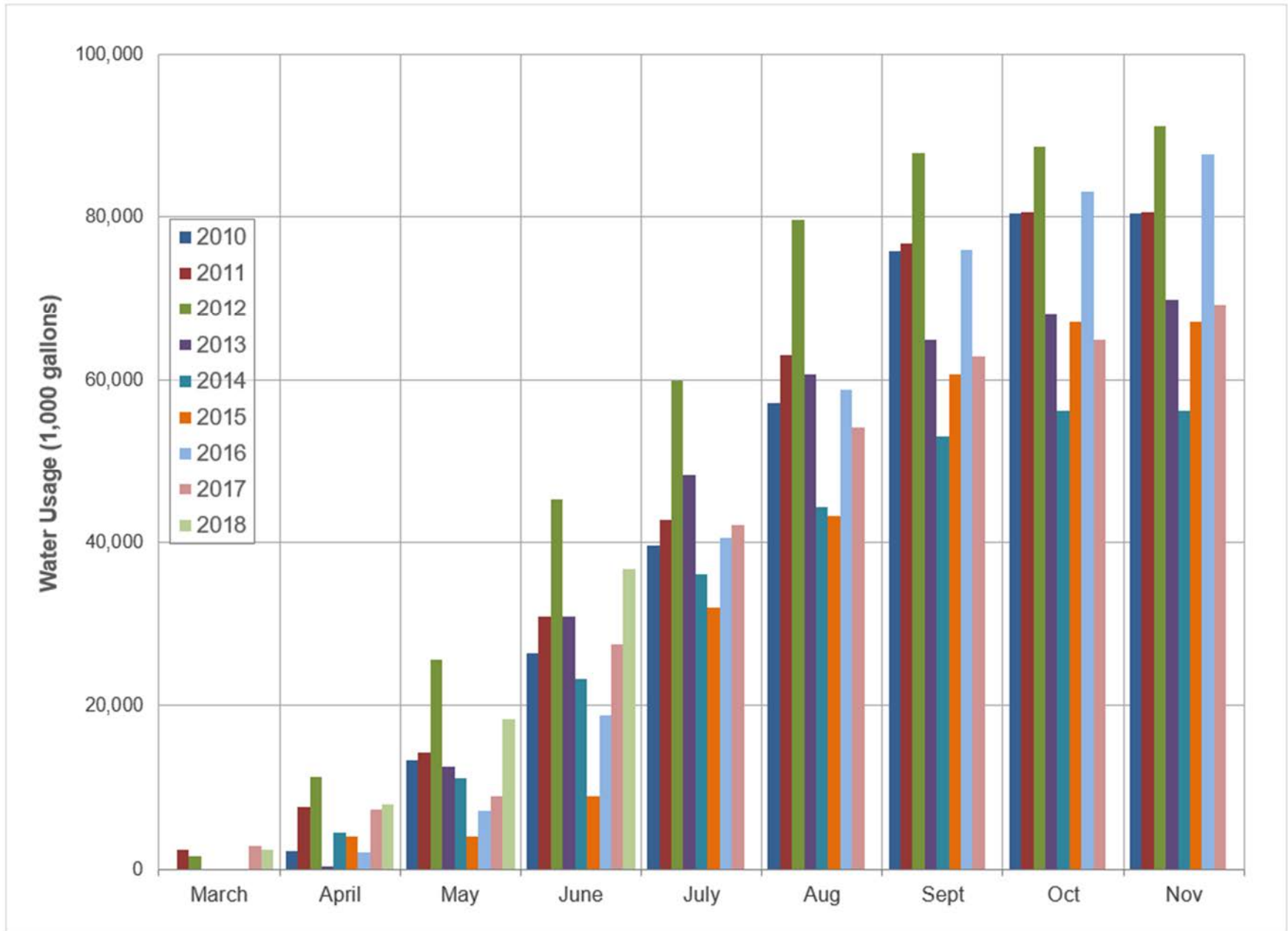


Figure 1 – Current and Historic Cumulative Annual Water Usage (2010 - June 2018)

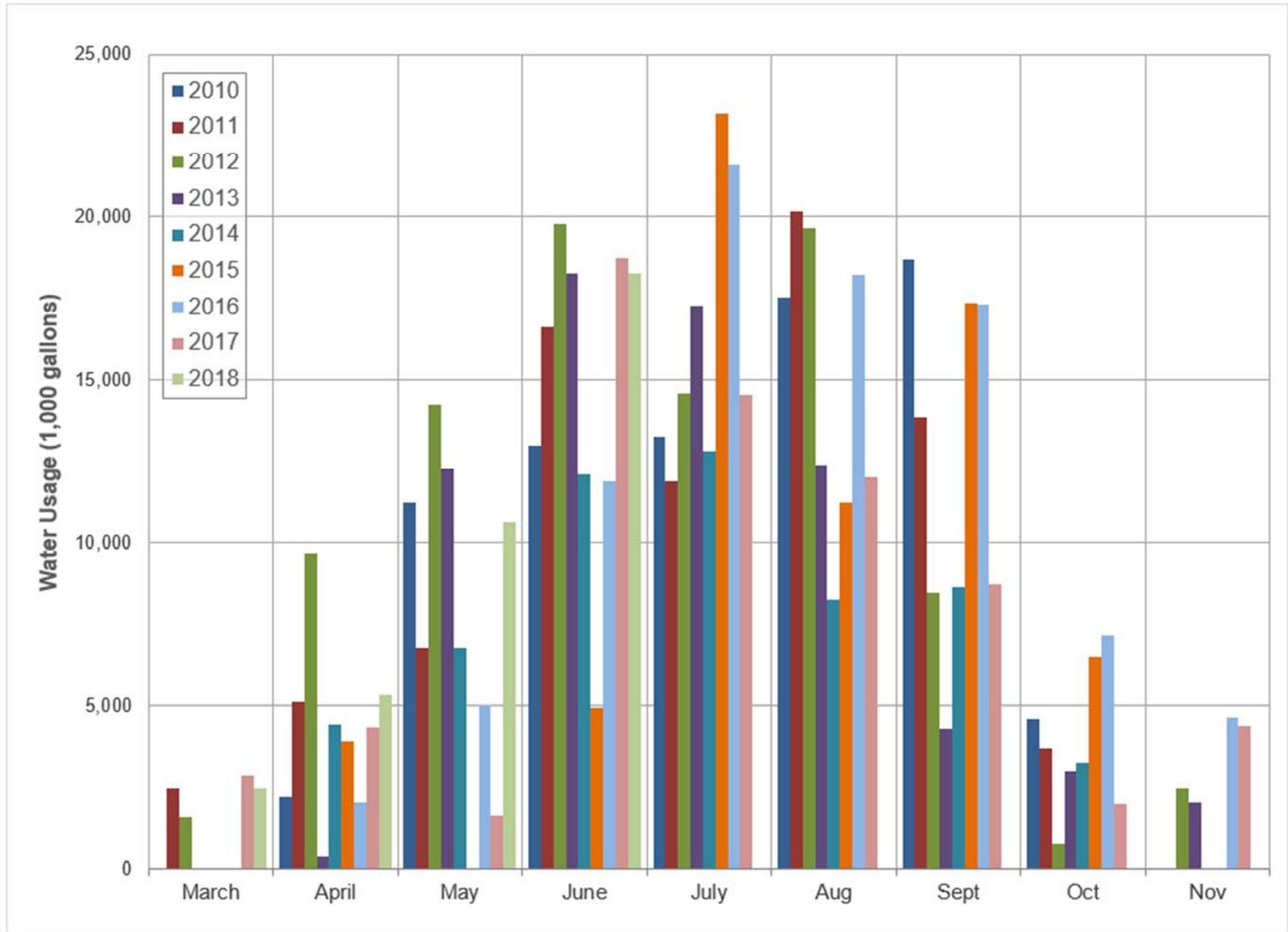


Figure 2 – Current and Historic Monthly Water Usage (2010 - June 2018)

Table 2 – Monthly water usage and billing for Eagle Bend Metro January - June 2018

Eagle Bend Water and Energy Utilities (2018) - through June 2018														
Service Month (nominal)	Initial	January	February	March	April	May	June	July	Aug	Sept	Oct	Nov	Dec	YTD
Meter Reads														
North Well	7,292	7,292	7,292	7,292	7,292	10,805	16,104							
South Well	12,031	12,031	12,031	14,487	19,804	26,874	36,503							
ECCV	11,109	11,109	11,109	11,109	11,109	11,109	13,360							
Aurora (Buchanan Way)	25,297	25,297	25,297	25,297	25,297	25,297	26,287							
Aurora (Aurora Pky)	5,484	5,484	5,484	5,484	5,521	5,586	5,670							
kgal														
North Well		0	0	0	0	3,513	5,299							8,812
South Well		0	0	2,456	5,317	7,070	9,629							24,472
ECCV		0	0	0	0	0	2,251							2,251
Aurora (Buchanan Way)		0	0	0	0	0	990							990
Aurora (Aurora Pky)		0	0	0	37	65	84							186
Total - kgal		0	0	2,456	5,354	10,648	18,253							36,711
Total - af		0.0	0.0	7.5	16.4	32.7	56.0							112.7
COA Billing*														
* Late fees not included														
North Well	\$0.00	\$0.00	\$0.00	\$0.00	\$0.00	\$1,510.59	\$2,278.57							\$3,789.16
South Well	\$0.00	\$0.00	\$0.00	\$1,056.08	\$2,286.31	\$3,040.10	\$4,140.47							\$10,522.96
ECCV	\$0.00	\$0.00	\$0.00	\$0.00	\$0.00	\$0.00	\$14,586.48							\$14,586.48
Aurora (Buchanan Way)	\$0.00	\$65.82	\$65.82	\$65.82	\$65.82	\$65.82	\$6,768.12							\$7,097.22
Aurora (Aurora Pky)	\$0.00	\$17.07	\$17.07	\$17.07	\$267.56	\$457.12	\$585.75							\$1,361.64
Total	\$0.00	\$82.89	\$82.89	\$1,138.97	\$2,619.69	\$5,073.63	\$28,359.39							\$37,357.46
Xcel Energy Billing														
North Well	\$803.92	\$401.89	\$399.15	\$401.96	\$396.56	\$3,718.65	\$4,895.74							\$11,017.87
South Well	\$7,299.22	\$535.80	\$541.27	\$3,649.61	\$4,538.60	\$5,099.28	\$6,315.49							\$27,979.27
Total	\$8,103.14	\$937.69	\$940.42	\$4,051.57	\$4,935.16	\$8,817.93	\$11,211.23							\$38,997.14
Xcel \$/kgal (approx., some time lag)														
North Well	\$0.00	-	-	-	-	\$1.06	\$0.92							\$1.25
South Well	\$0.00	-	-	\$1.49	\$0.85	\$0.72	\$0.66							\$1.14
Combined	\$0.00	-	-	\$1.65	\$0.85	\$0.72	\$0.75							\$1.17
HOA Billing	\$0.00	\$0.00	\$0.00	\$31,754.00	\$39,872.24	\$54,543.30	\$87,909.46							\$214,079.00
Net to District	\$0.00	-	-	\$26,563.46	\$32,317.39	\$40,651.74	\$48,338.84							\$147,871.43
Credit towards ECCV SL	\$0.00	\$0.00	\$0.00	\$0.00	\$0.00	\$0.00	\$9,791.85							\$9,791.85