

WATER OPERATIONS SUMMARY FOR JANUARY 2018

February 5, 2018

General Operations

During the month of January, the North Well and South Well have remained offline and pond level remained at full capacity.

Action Items

No Updates

Utility Notification Center of Colorado (UNCC)

In the month of January, TZA has responded to 40 utility locate tickets.

Water Usage

PLEASE NOTE: This section is current through February 5, 2018. An updated draft will be sent once invoices are received for the month of November. Water Usage data is collected from invoices received from Xcel Energy and Aurora Water. For historical water usage, please refer to Table 1 as well as Figure 1 and Figure 2. For monthly water usage and billing for 2017, refer to Table 2.

Table 1 – Historic Annual Water Usage, to Date

| Year | North Well | | South Well | | ECCV Line, Buchanan Tap, Aurora Pkwy Tap | | Total |
|---------------------|------------|----|------------|----|--|----|--------|
| | kgal | % | kgal | % | kgal | % | kgal |
| 2011 | 29,408 | 37 | 38,888 | 48 | 12,273 | 15 | 80,569 |
| 2012 | 25,416 | 28 | 55,493 | 61 | 10,368 | 11 | 91,277 |
| 2013 | 26,223 | 38 | 38,791 | 55 | 4,982 | 7 | 69,996 |
| 2014 | 18,472 | 33 | 33,808 | 60 | 4,036 | 7 | 56,316 |
| 2015 | 20,510 | 30 | 37,999 | 57 | 8,650 | 13 | 67,159 |
| 2016 | 21,569 | 25 | 55,478 | 63 | 10,824 | 12 | 87,871 |
| 2017 | 21,277 | 31 | 33,884 | 49 | 13,589 | 20 | 69,258 |
| Average (2010-2016) | 23,600 | 32 | 43,410 | 57 | 8,522 | 11 | 75,531 |

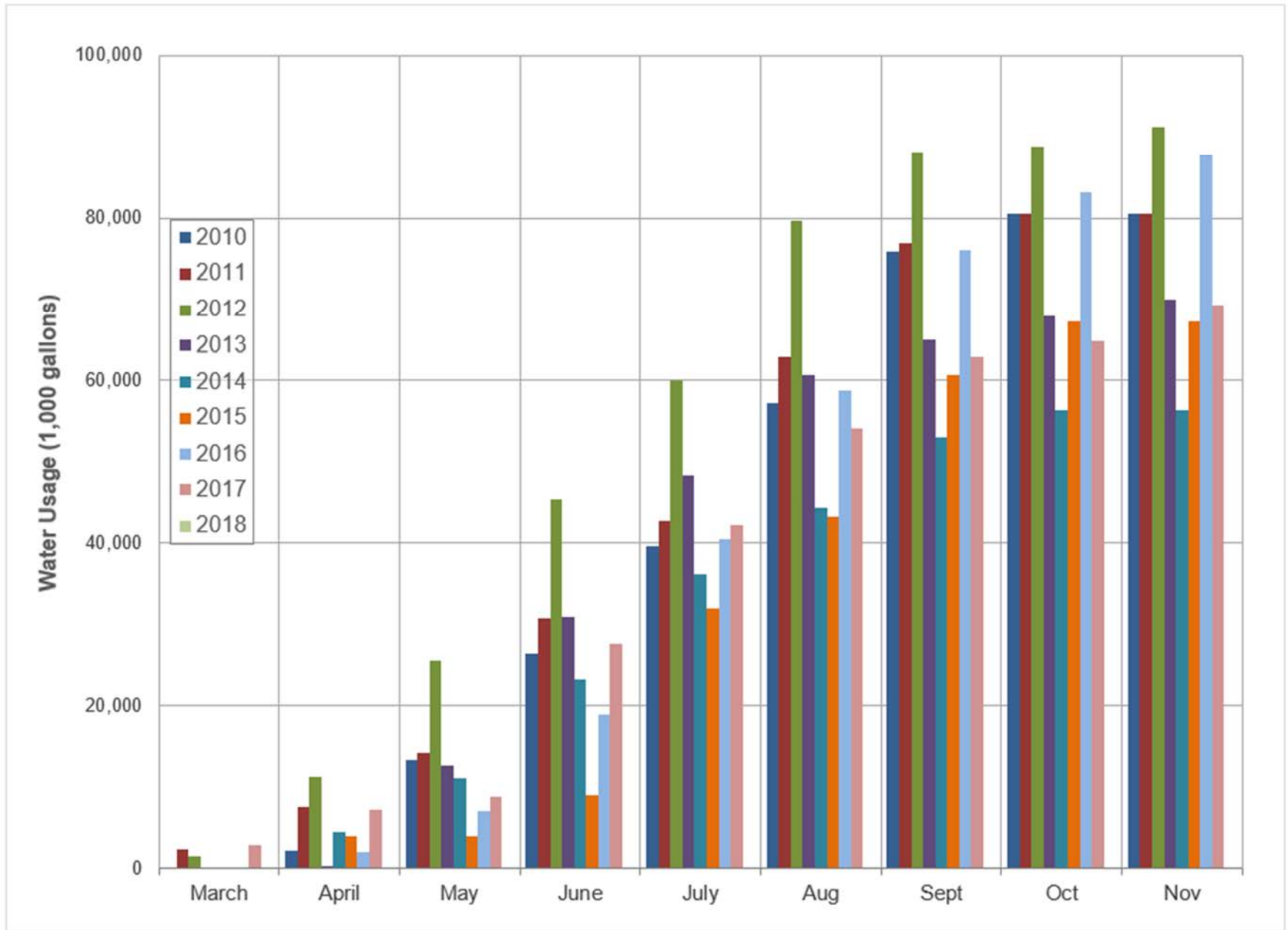


Figure 1 – Current and Historic Cumulative Annual Water Usage (2010-2017)

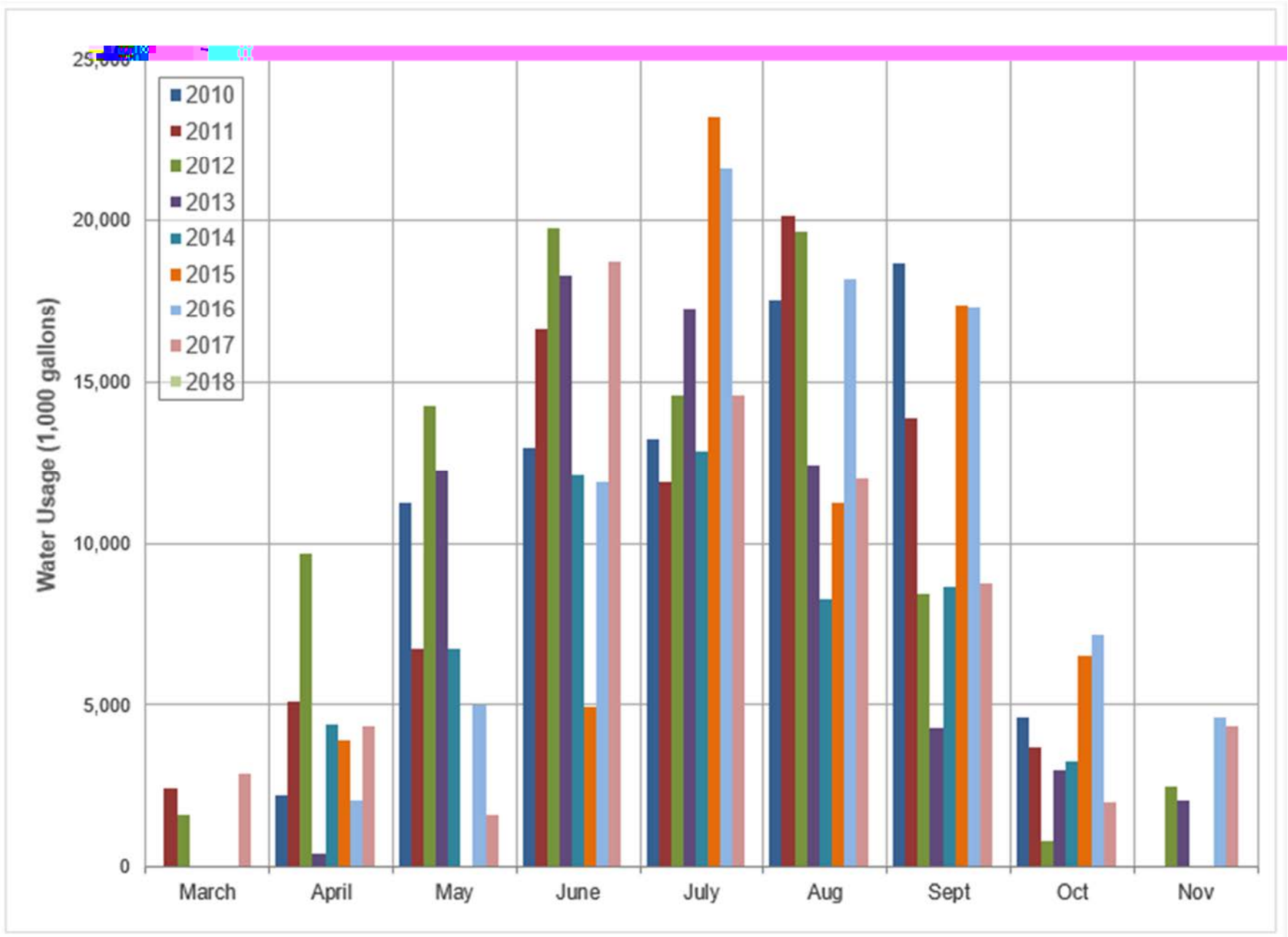


Figure 2 – Current and Historic Monthly Water Usage (2010-2017)

Table 2 – Monthly water usage and billing for Eagle Bend Metro District January 2018

| Eagle Bend Water and Energy Utilities (2018) - through Jan 2018 | | | | | | | | | | | | | | |
|---|---------|----------|----------|-------|-------|-----|------|------|-----|------|-----|-----|-----|----------|
| Service Month (nominal) | Initial | January | February | March | April | May | June | July | Aug | Sept | Oct | Nov | Dec | YTD |
| Meter Reads | | | | | | | | | | | | | | |
| North Well | 7,292 | 7,292 | | | | | | | | | | | | |
| South Well | 12,031 | 12,031 | | | | | | | | | | | | |
| ECCV | | 9,695 | | | | | | | | | | | | |
| Aurora (Buchanan Way) | 25,297 | 25,297 | | | | | | | | | | | | |
| Aurora (Aurora Pky) | 5,484 | 5,484 | | | | | | | | | | | | |
| kgal | | | | | | | | | | | | | | |
| North Well | | 0 | | | | | | | | | | | | 0 |
| South Well | | 0 | | | | | | | | | | | | 0 |
| ECCV | | 0 | | | | | | | | | | | | 0 |
| Aurora (Buchanan Way) | | 0 | | | | | | | | | | | | 0 |
| Aurora (Aurora Pky) | | 0 | | | | | | | | | | | | 0 |
| Total - kgal | | 0 | | | | | | | | | | | | 0 |
| Total - af | | 0.0 | | | | | | | | | | | | 0.0 |
| COA Billing* | | | | | | | | | | | | | | |
| * Late fees not included | | | | | | | | | | | | | | |
| North Well | \$0.00 | \$0.00 | | | | | | | | | | | | \$0.00 |
| South Well | \$0.00 | \$0.00 | | | | | | | | | | | | \$0.00 |
| ECCV | \$0.00 | \$0.00 | | | | | | | | | | | | \$0.00 |
| Aurora (Buchanan Way) | \$0.00 | \$65.82 | | | | | | | | | | | | \$65.82 |
| Aurora (Aurora Pky) | \$0.00 | \$17.07 | | | | | | | | | | | | \$17.07 |
| Total | \$0.00 | \$82.89 | | | | | | | | | | | | \$82.89 |
| Xcel Energy Billing | | | | | | | | | | | | | | |
| North Well | \$0.00 | \$401.89 | | | | | | | | | | | | \$401.89 |
| South Well | \$0.00 | \$535.80 | | | | | | | | | | | | \$535.80 |
| Total | \$0.00 | \$937.69 | | | | | | | | | | | | \$937.69 |
| Xcel \$/kgal (approx., some time lag) | | | | | | | | | | | | | | |
| North Well | \$0.00 | - | | | | | | | | | | | | - |
| South Well | \$0.00 | - | | | | | | | | | | | | - |
| Combined | \$0.00 | - | | | | | | | | | | | | - |
| HOA Billing | \$0.00 | \$0.00 | | | | | | | | | | | | \$0.00 |
| Net to District | \$0.00 | - | | | | | | | | | | | | \$0.00 |
| Credit towards ECCV SL | \$0.00 | \$0.00 | | | | | | | | | | | | \$0.00 |