

WATER OPERATIONS SUMMARY FOR AUGUST 2018

September 6, 2018

General Operations

During the month of August, the South Well operated for approximately 23 days, operating all 24 hours per day for most of these run days. The average flow rate when running was approximately 265 GPM and a total of approximately 8.32 million gallons was delivered to the HEB irrigation pond. During the periodic shut offs, the static water level would recover from approximately 140 feet up to 280 feet. Recovery periods were short due to summer irrigation demands although short rainy stretches did allow the wells to recover some.

The North Well operated for approximately 23 days, operating all 24 hours per day for most of these run days. The average flow rate was approximately 145 GPM and a total of approximately 4.47 million gallons was delivered to the HEB irrigation pond. During periodic shut offs when the well wasn't needed, the static water level would recover from approximately 120 feet to 270 feet. Recovery periods were short due to summer irrigation demands although short rainy stretches did allow the wells to recover some. The ECCV line is still not available to HEB.

Action Items

Board Meeting, ECCV, and Updated Operations Manual

Date	Status Update
8/28/2018	Brit spoke with Glen Bedell from ECCV; Glen said the ECCV line would likely not be available to HEB for at least the first half of September and to check in again during the second half of September.
8/16/2018	Brit attended board meeting to report on well use, Buchanan Tap use, and operations manual.
8/15/2018	Finalized updates to operations manual including new images, Buchanan Tap operations, and Buchanan Tap cost information.

Analog Data Fixes

Date	Status Update
8/29/2018	After several days of signal issues with the south well (well dropping signal, turning off, coming back online) Brit and Adam from Mission Control discovered that the signal at the South Well has dropped progressively since January 1, 2018 (from -89 dBm to -99 dBm) and quite a bit since August 1, 2018 as well (from -99 dBm to -107 dBm). Adam stated that about -65 dBm is optimal and that -107 dBm is pushing the limits of where signal can be received at all. Site inspection in the near future and fixing of whatever is causing the signal issue at the south well is recommended.
8/8/2018	Assisted Mike Douglass and support staff at Mission Control with attempts to fix analog data using grounding techniques; continuing communication on this topic.

Utility Notification Center of Colorado (UNCC)

In the month of August, TZA responded to 146 utility locate tickets.

Water Usage

PLEASE NOTE: This section is current through September 6th, 2018. An updated draft will be sent once invoices are received for the month of August. Water Usage data is collected from invoices received from Xcel Energy and Aurora Water. For historical water usage, please refer to Table 1 as well as Figure 1 and Figure 2. For monthly water usage and billing for 2018, refer to Table 2.

Table 1 – Historic Annual Water Usage, to Date

Year	North Well		South Well		ECCV Line, Buchanan Tap, Aurora Pkwy Tap		Total
	kgal	%	kgal	%	kgal	%	kgal
2011	29,408	37	38,888	48	12,273	15	80,569
2012	25,416	28	55,493	61	10,368	11	91,277
2013	26,223	38	38,791	55	4,982	7	69,996
2014	18,472	33	33,808	60	4,036	7	56,316
2015	20,510	30	37,999	57	8,650	13	67,159
2016	21,569	25	55,478	63	10,824	12	87,871
2017	21,277	31	33,884	49	14,097	20	69,258
2018	17,129	27	39,705	63	6,466	10	63,300
Average (2010-2017)	23,268	32	42,049	56	9,319	12	74,635

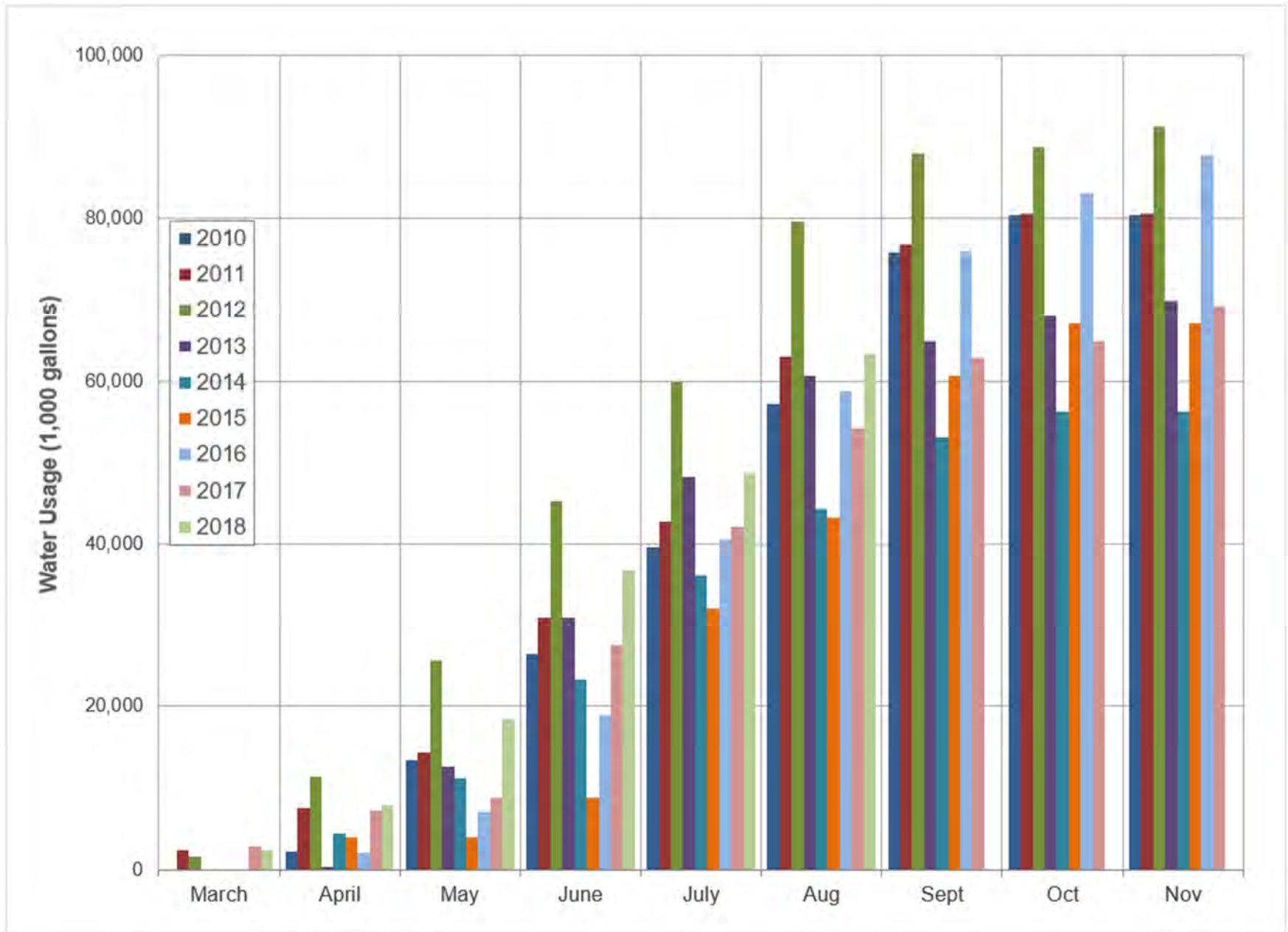


Figure 1 – Current and Historic Cumulative Annual Water Usage (2010 - August 2018)

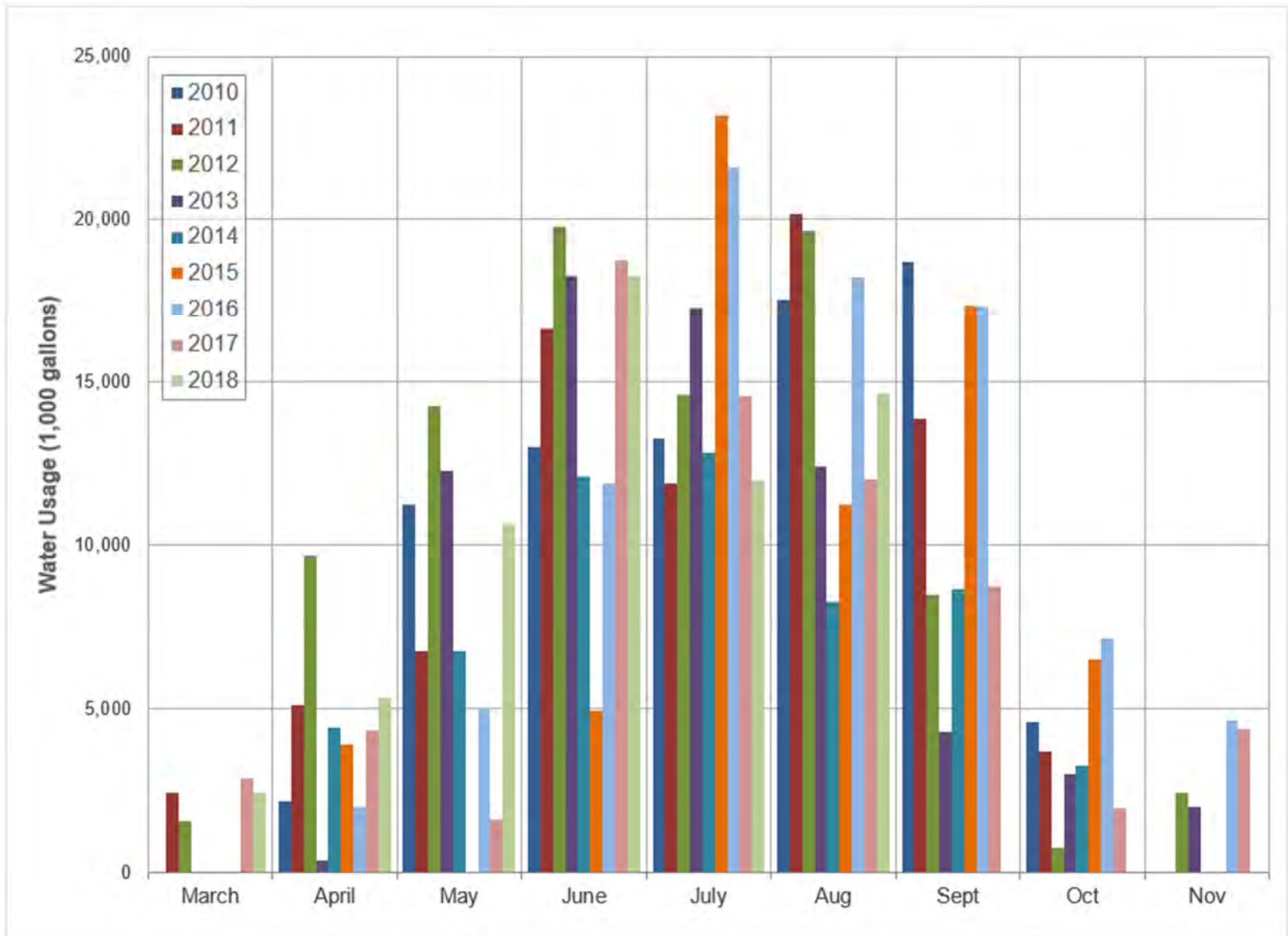


Figure 2 – Current and Historic Monthly Water Usage (2010 - August 2018)

Table 2 – Monthly water usage and billing for Eagle Bend Metro District No. 2 (2018)

Eagle Bend Water and Energy Utilities (2018) - through August 2018														
Service Month (nominal)	Initial	January	February	March	April	May	June	July	Aug	Sept	Oct	Nov	Dec	YTD
Meter Reads														
North Well	7,292	7,292	7,292	7,292	7,292	10,805	16,104	19,811	24,421					
South Well	12,031	12,031	12,031	14,487	19,804	26,874	36,503	43,134	51,736					
ECCV	11,109	11,109	11,109	11,109	11,109	11,109	13,360	13,360	13,360					
Aurora (Buchanan Way)	25,297	25,297	25,297	25,297	25,297	25,297	26,287	27,814	29,139					
Aurora (Aurora Pky)	5,484	5,484	5,484	5,484	5,521	5,586	5,670	5,761	5,857					
kgal														
North Well		0	0	0	0	3,513	5,299	3,707	4,610					17,129
South Well		0	0	2,456	5,317	7,070	9,629	6,631	8,602					39,705
ECCV		0	0	0	0	0	2,251	0	0					2,251
Aurora (Buchanan Way)		0	0	0	0	0	990	1,527	1,325					3,842
Aurora (Aurora Pky)		0	0	0	37	65	84	91	96					373
Total - kgal		0	0	2,456	5,354	10,648	18,253	11,956	14,633					63,300
Total - af		0.0	0.0	7.5	16.4	32.7	56.0	36.7	44.9					194.3
COA Billing*														
* Late fees not included														
North Well	\$0.00	\$0.00	\$0.00	\$0.00	\$0.00	\$1,510.59	\$2,278.57	\$1,594.01	\$1,982.30					\$7,365.47
South Well	\$0.00	\$0.00	\$0.00	\$1,056.08	\$2,286.31	\$3,040.10	\$4,140.47	\$2,851.33	\$3,698.86					\$17,073.15
ECCV	\$0.00	\$0.00	\$0.00	\$0.00	\$0.00	\$0.00	\$14,586.48	\$0.00	\$0.00					\$14,586.48
Aurora (Buchanan Way)	\$0.00	\$65.82	\$65.82	\$65.82	\$65.82	\$65.82	\$6,768.12	\$10,403.61	\$9,036.07					\$26,536.90
Aurora (Aurora Pky)	\$0.00	\$17.07	\$17.07	\$17.07	\$267.56	\$457.12	\$585.75	\$633.14	\$666.99					\$2,661.77
Total	\$0.00	\$82.89	\$82.89	\$1,138.97	\$2,619.69	\$5,073.63	\$28,359.39	\$15,482.09	\$15,384.22					\$68,223.77
Xcel Energy Billing														
North Well	\$803.92	\$401.89	\$399.15	\$401.96	\$396.56	\$3,718.65	\$4,895.74	\$4,046.84	\$4,356.36					\$19,421.07
South Well	\$7,299.22	\$535.80	\$541.27	\$3,649.61	\$4,538.60	\$5,099.28	\$6,315.49	\$5,132.85	\$5,560.61					\$38,672.73
Total	\$8,103.14	\$937.69	\$940.42	\$4,051.57	\$4,935.16	\$8,817.93	\$11,211.23	\$9,179.69	\$9,916.97					\$58,093.80
Xcel S/kgal (approx., some time lag)														
North Well	\$0.00	-	-	-	-	\$1.06	\$0.92	\$1.09	\$0.94					\$1.13
South Well	\$0.00	-	-	\$1.49	\$0.85	\$0.72	\$0.66	\$0.77	\$0.65					\$0.97
Combined	\$0.00	-	-	\$1.65	\$0.85	\$0.72	\$0.75	\$0.89	\$0.75					\$1.02
HOA Billing	\$0.00	\$0.00	\$0.00	\$31,754.00	\$39,872.24	\$54,543.30	\$87,909.46	\$64,383.36	\$70,953.17					\$349,415.53
Net to District	\$0.00	-	-	\$26,563.46	\$32,317.39	\$40,651.74	\$48,338.84	\$39,721.58	\$45,651.98					\$233,244.99
Credit towards ECCV SL	\$0.00	\$0.00	\$0.00	\$0.00	\$0.00	\$0.00	\$9,791.85	\$0.00	\$0.00					\$9,791.85