

Water Report - End of Year 2014

Eagle Bend Metropolitan District No. 2

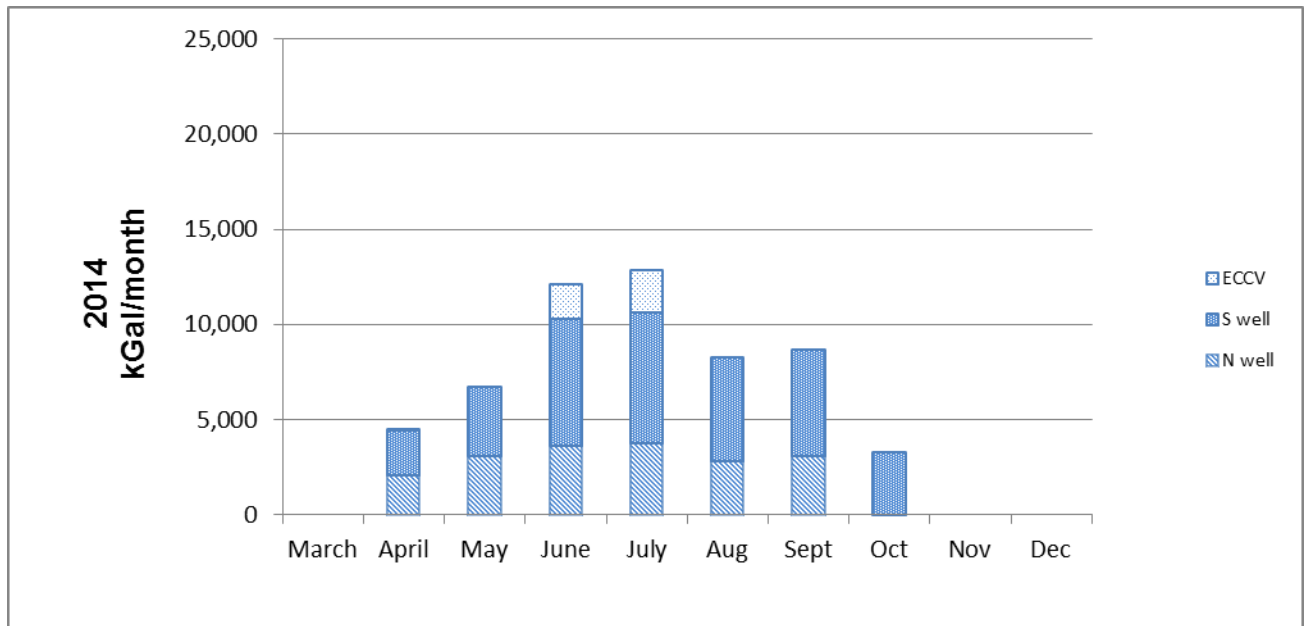
December 11, 2014

No additional water use since last month's report. Water use for the year was about 56 million gallons which is about 70% of the previous four-year average.

Upcoming priorities for water system operations and maintenance include the following:

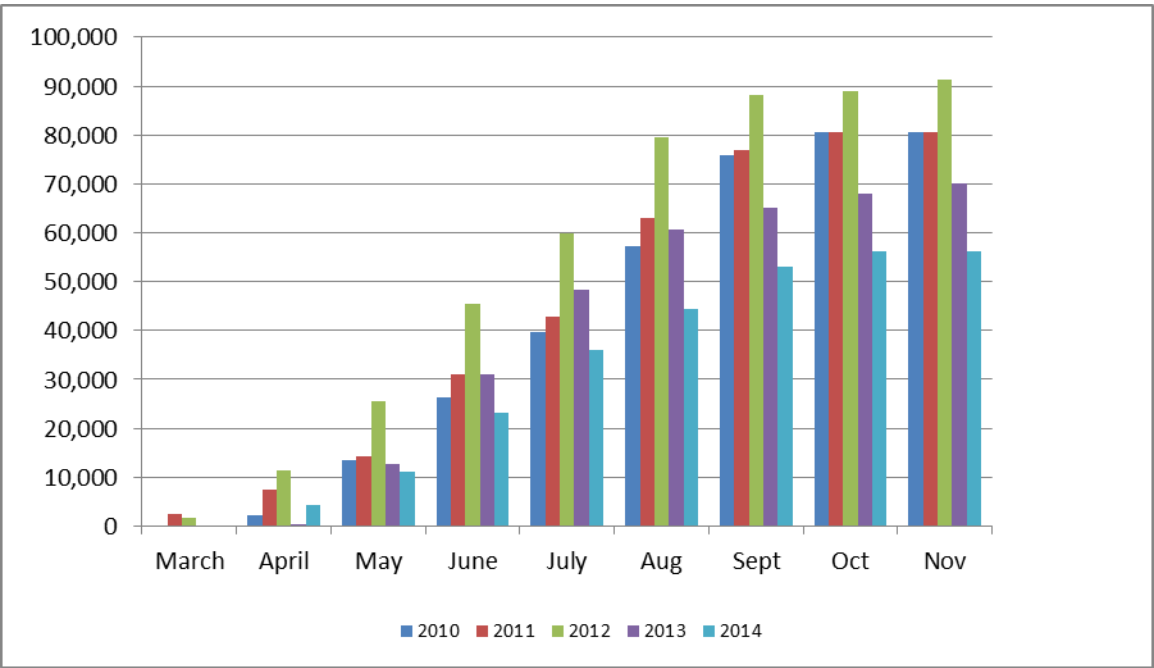
1. Completing the Wi-Fi work during the off season (estimated budget of \$1,500 to \$2,000)
2. Evaluate automated meter reading/monitoring for the District's four streetscape irrigation meters
3. Weed control at the two well sites
4. Consider alternative service to maintain the District's GIS mapping
5. Further investigations into the District's long term, post-WISE use of the ECCV Service Line
6. Further work on determining the feasibility of a third Denver Basin groundwater well

MONTHLY FLOWS - 2014

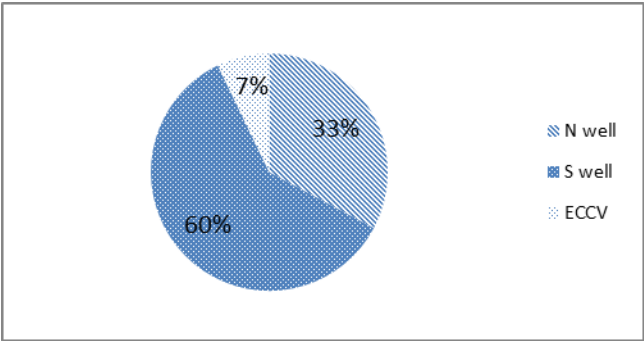


(Note that our peak month supply during June and August of 2012 was about 20 MG compared with approximately 13 MG during July 2014)

CURRENT/HISTORIC CUMULATIVE FLOWS - 2014



Water Sources - 2014



(The 7% from ECCV in 2014 compares with 15% in 2011, 11% in 2012, and 7% in 2013)

