

**Water Report for August 2014**  
Eagle Bend Metropolitan District No. 2

Due to frequent precipitation, water use year-to-date continues to be very low compared with recent years. We are currently at about 42 million gallons ytd compared with an average of about 63 MG for the past five years and a peak of almost 80 MG in 2012. So far during August, the wells have only run about 33% of the time. This compares with about 67% cycle time during July (also a relatively wet month) and an anticipated run time of 90% or more during typical peak irrigation months of July and August.

The custom made steel post base, which secures the gate post at the North Well directly to the roof of the concrete vault, was installed and the installation of the sump pump was completed. The 20-foot antenna mast, to improve the telemetry signal strength between the north and south wells, will be installed later this week.

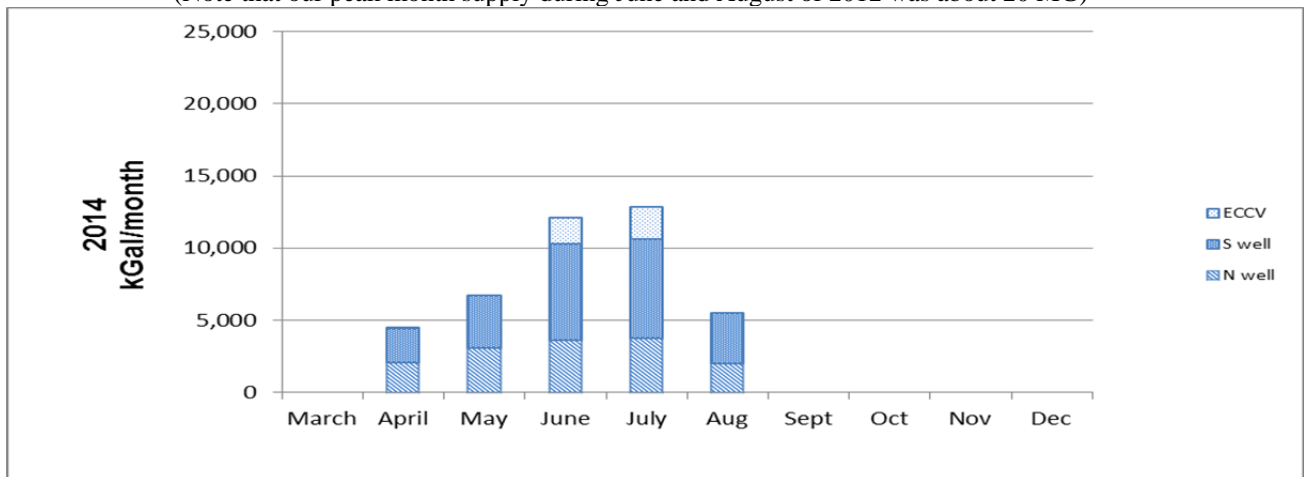
During the past month, the North Well variable frequency drive (VFD) faulted out twice due to power issues with Xcel. The Wi-Fi alerts us of a problem and the well is returned to operation after manual acknowledgement and reset at the drive. As discussed previously, the VFD manufacturer has advised us not to have an automatic reset of this fault in order that an operator verify that power quality has returned to a stable condition before restarting the well.

The solar electric power supply for ECCV's telemetry at the ECCV Service Line was returned to service; a replacement solar charger and inverter were installed. Year to date we have used about 4 MG of water from the ECCV Service Line (about 11% of the total water supplied); with two draws during the first weeks of June and July. We use the ECCV water when the level in the Fairway 4 pond drops more than 3 feet, indicating that the two well pumps are not keeping up with demand. Last week we almost needed to make a third draw, and then the rains began again on August 19<sup>th</sup>.

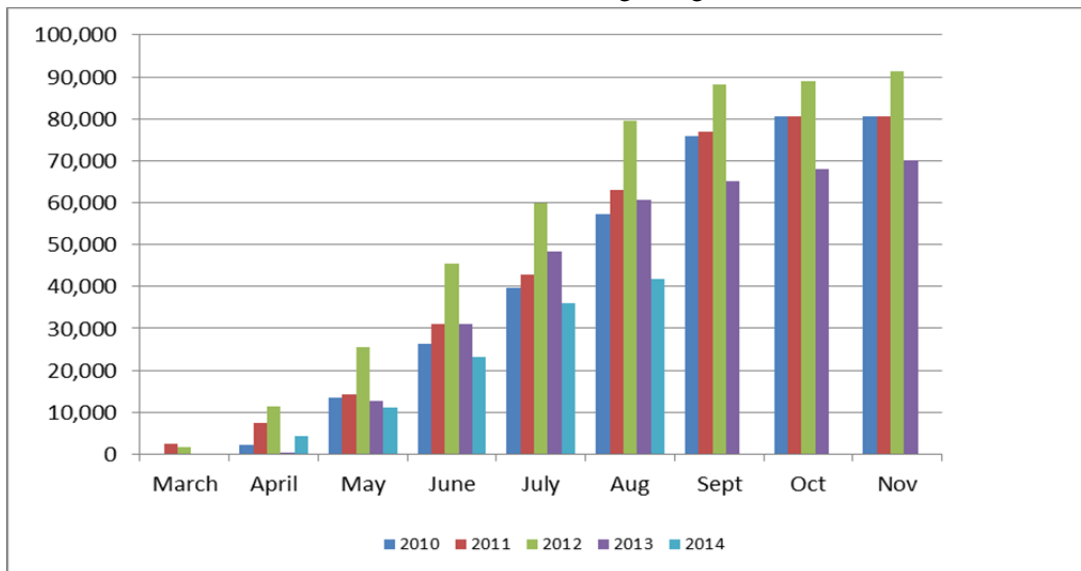
There were no other problems with the wells or Wi-Fi telemetry system. Unlike previous years, we have not incurred any damage to electrical and telemetry gear due to lightning this year. We have good quality surge protection equipment for incoming electrical power and for telemetry antennas.

Pure Cycle personnel are no longer monitoring the operation of, or otherwise involved in any way with, the Filing 9 Sump Pump.

**YEAR TO DATE - through August 24<sup>th</sup>**  
(Note that our peak month supply during June and August of 2012 was about 20 MG)



**YEAR TO DATE - through August 24<sup>th</sup>**



**YEAR TO DATE - through August 24<sup>th</sup>**

| <b>Eagle Bend - 2014</b>                     |             | Thru August 24th |             |             |             |             |       |              |  |
|--|-------------|------------------|-------------|-------------|-------------|-------------|-------|--------------|--|
| Service Month (nominal)                      | Initial     | March            | April       | May         | June        | July        | Aug   | YTD          |  |
| <b>Meter Reads</b>                           |             |                  |             |             |             |             |       |              |  |
| North Well                                   | 6223        | 6223             | 8315        | 11418       | 15013       | 18769       | 1     |              |  |
| South Well                                   | 56954       | 56954            | 59280       | 62924       | 69600       | 76500       |       |              |  |
| ECCV   | 42956       | 42956            | 42959       | 42959       | 44797       | 46992       |       |              |  |
| Aurora Potable                               | 25297       | 25297            | 25297       | 25297       | 25297       | 25297       |       |              |  |
| <b>kgal</b>                                  |             |                  |             |             |             |             |       |              |  |
| North Well                                   |             | 0                | 2,092       | 3,103       | 3,595       | 3,756       | 1,999 | 14,545       |  |
| South Well                                   |             | 0                | 2,326       | 3,644       | 6,676       | 6,900       | 3,539 | 23,085       |  |
| ECCV   |             | 0                | 3           | 0           | 1,838       | 2,195       | 0     | 4,036        |  |
| Aurora Potable                               |             | 0                | 0           | 0           | 0           | 0           | 0     | 0            |  |
| Total - kgal                                 |             | 0                | 4,421       | 6,747       | 12,109      | 12,851      | 5,538 | 41,666       |  |
| Total - af                                   |             | 0.0              | 13.6        | 20.7        | 37.2        | 39.4        | 17.0  | 127.9        |  |
| <b>COA Billing (2 months)</b>                |             |                  |             |             |             |             |       |              |  |
| North Well                                   | \$0.00      | \$0.00           | \$878.64    | \$1,303.26  | \$1,509.90  | \$1,577.52  |       | \$5,269.32   |  |
| South Well                                   | \$0.00      | \$0.00           | \$976.92    | \$1,530.48  | \$2,803.92  | \$2,898.00  |       | \$8,209.32   |  |
| ECCV   | \$0.00      | \$0.00           | \$19.44     | \$0.00      | \$11,910.24 | \$14,223.60 |       | \$26,153.28  |  |
| Aurora Potable                               | \$87.14     | \$43.57          | \$43.57     | \$43.57     | \$43.57     | \$43.57     |       | \$304.99     |  |
| Total  | \$87.14     | \$43.57          | \$1,918.57  | \$2,877.31  | \$16,267.63 | \$18,742.69 |       | \$39,849.77  |  |
| <b>Xcel Energy Billing (2 months)</b>        |             |                  |             |             |             |             |       |              |  |
| North Well                                   | \$885.53    | \$494.68         | \$3,798.39  | \$3,981.06  | \$4,278.21  | \$4,507.41  |       | \$17,945.28  |  |
| South Well                                   | \$1,620.23  | \$451.21         | \$3,943.95  | \$3,995.18  | \$6,024.79  | \$6,489.51  |       | \$22,524.87  |  |
| Total  | \$2,505.76  | \$945.89         | \$7,742.34  | \$7,976.24  | \$10,303.00 | \$10,996.92 |       | \$40,470.15  |  |
| <b>Xcel \$/kgal (approx., some time lag)</b> |             |                  |             |             |             |             |       |              |  |
| North Well                                   |             |                  | \$1.82      | \$1.28      | \$1.19      | \$1.20      |       | \$1.23       |  |
| South Well                                   |             |                  | \$1.70      | \$1.10      | \$0.90      | \$0.94      |       | \$0.98       |  |
| Combined                                     |             |                  | \$1.75      | \$1.18      | \$1.00      | \$1.03      |       | \$1.48       |  |
| HOA Billing                                  | \$22,000.00 | \$22,000.00      | \$33,406.18 | \$39,407.26 | \$53,241.22 | \$55,155.58 |       | \$225,210.24 |  |
| Net to District                              | \$0.00      | \$21,010.54      | \$23,745.27 | \$28,553.71 | \$26,670.59 | \$25,415.97 |       | \$125,396.08 |  |
| Credit towards ECCV SL                       | \$0.00      | \$0.00           | \$13.05     | \$0.00      | \$7,995.30  | \$9,548.25  |       | \$17,556.60  |  |