

MONTHLY SUMMARY – Eagle Bend Water Supply – September 23, 2013

The Daily Flows Table (thru September 23rd) and General Summary Table are attached. With the record breaking rains of the past couple of weeks, the wells have been off since September 11th. Water use to date for 2013 is now about 12% less than that for 2010 and 2011, and about 27% less than 2012.

Even though we have used the WiFi to turn both wells off in anticipation of rains when the pond level was down at about -1.5 feet, the pond has “overflowed” following the rain events that started on September 10th and this morning.

We have not drawn any additional water from the ECCV Service Line since mid-July. Usage to date from the ECCV Service Line has been about 4½ million gallons which is about 8% of our total water supplied. On September 10th, I met with Aurora Water staff and a representative of the water meter manufacturer to investigate problems that they were having with remote meter readings at ECCV Service Line Vault; but this did not affect the accuracy of the meter reads or the water billings. We also verified operation of the new (this Spring) water meter equipment at the North Well.

With the most recent billings, Aurora Water has stopped charging the approximately \$119 monthly service charge for the ECCV Service Line. Staff said they would issue us a credit for the past several months; but I’m not holding my breath.

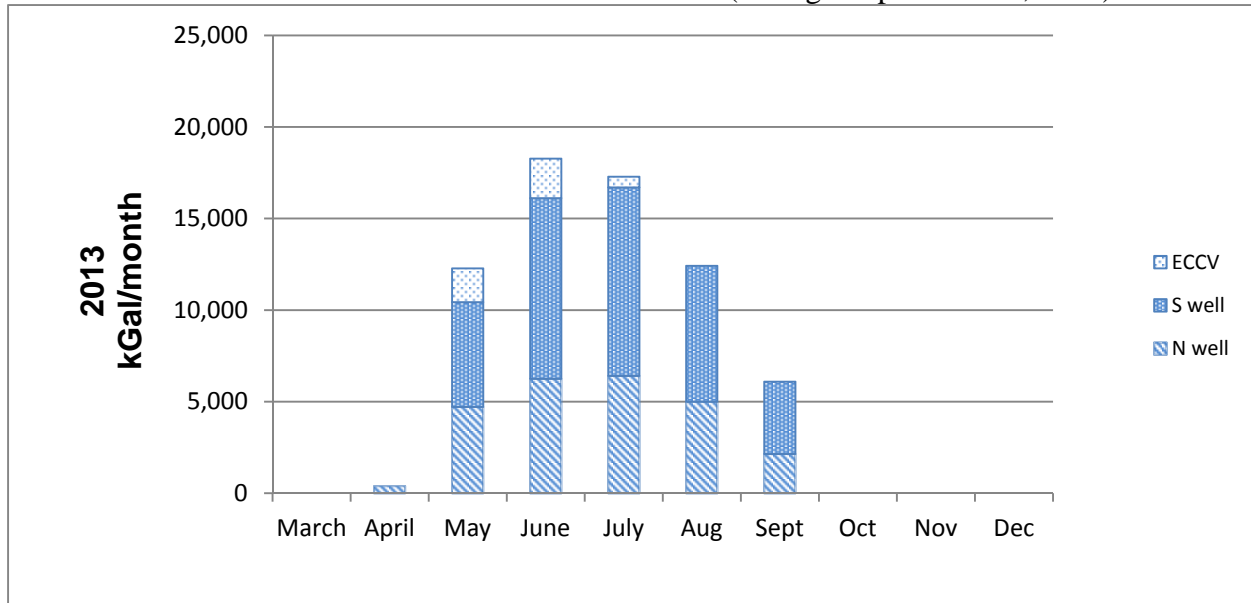
Problems with the radio telemetry between the north and south wells were resolved by replacing the antenna surge arrestor and the transmitter at the South Well and by adjusting the antennas. Signal strength is still marginal but we have had no lost signals. Director Rexroat assisted me with identifying measures to improve the signal strength; e.g., shorter antenna cable lengths, mounting the antennas higher to clear intervening trees, etc.. During the past month there has been one more occurrence of the “Input Phase Fault” shut down of the North Well; with manual reset solving the problem without difficulty.

The cellular alarm dialer and data logger for the Filing 9 sump pump have been operating for the past month. Following heavy rains, the pump runs for about 8 minutes every 1 hour for a 13% duty cycle. At other times, the pump runs for about 7 minutes every three hours for a 4% duty cycle. There have been no high level alarms.

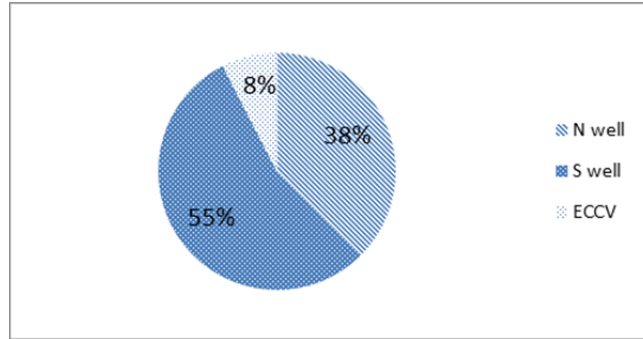
I remain available to discuss any questions. Scott Lehman (303)292-3456 Cell (303)668-9546

<u>Start Date</u>	North Well Flow	South Well Flow	<u>ECCV (gallons)</u>	<u>Rainfall (inches)</u>	
8/1/2013	226,521	367,842	0	0.00	
8/2/2013	225,928	366,054	0	0.04	
8/3/2013	144,983	234,980	0	1.44	
8/4/2013	0	0	0	0.00	
8/5/2013	0	0	0	0.00	
8/6/2013	0	0	0	0.01	
8/7/2013	0	0	0	0.01	
8/8/2013	160,212	0	0	0.20	
8/9/2013	231,725	278,833	0	0.23	
8/10/2013	74,931	95,101	0	0.40	
8/11/2013	158,742	199,785	0	0.00	
8/12/2013	83,461	134,638	0	0.26	
8/13/2013	0	0	0	0.03	
8/14/2013	0	0	0	0.00	
8/15/2013	0	0	0	0.00	
8/16/2013	202,329	139,746	0	0.00	
8/17/2013	195,869	372,641	0	0.00	
8/18/2013	187,882	372,634	0	0.00	
8/19/2013	217,448	372,639	0	0	
8/20/2013	230,577	372,625	0	0	
8/21/2013	229,139	372,627	0	0	
8/22/2013	227,028	372,638	0	0.29	
8/23/2013	225,396	372,655	0	0.03	
8/24/2013	224,663	372,659	0	0.12	
8/25/2013	226,231	372,630	0	0.12	
8/26/2013	142,471	266,568	0	0	
8/27/2013	139,449	0	0	0	
8/28/2013	228,023	0	0	0	
8/29/2013	221,852	259,403	0	0	
8/30/2013	220,175	402,518	0	0	
8/31/2013	208,863	377,398	0	0	
August Totals	4,633,898	6,476,613	0	3.18	11,110,511
9/1/2013	215,647	392,037		0	
9/2/2013	214,201	391,189		0	
9/3/2013	213,042	389,806		0.02	
9/4/2013	212,170	386,260		0	
9/5/2013	211,710	387,856		0	
9/6/2013	211,352	387,808		0	
9/7/2013	210,863	388,229		0	
9/8/2013	210,513	387,526		0	
9/9/2013	209,969	387,679		0	
9/10/2013	209,164	386,908		1.01	
9/11/2013	31,762	59,702		0.85	
9/12/2013	0	0		2.18	
9/13/2013	0	0		0.58	
9/14/2013	0	0		0.82	
9/15/2013	0	0		0.12	
9/16/2013	0	0		0.01	
9/17/2013	0	0		0	
9/18/2013	0	0		0	
9/19/2013	0	0		0	
9/20/2013	0	0		0	
9/21/2013	0	0		0	
9/22/2013	0	0		0.23	
9/23/2013	0	0		0.99	
Sept - month to date	2,150,393	3,945,000	0	6.81	6,095,393

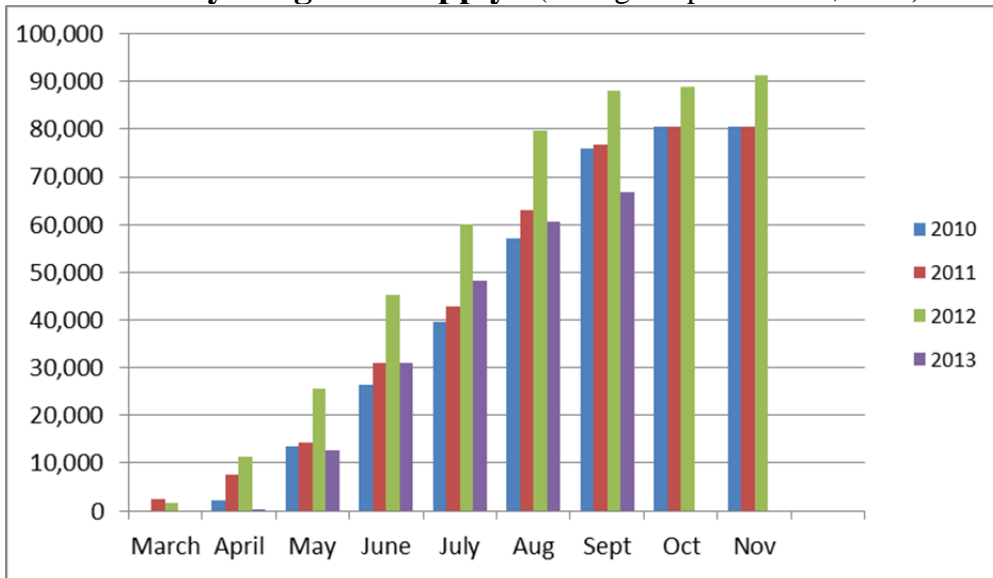
TOTAL IRRIGATION SUPPLY (through September 23, 2013)



Year to date makeup of irrigation supply (through September 23, 2013)



Monthly Irrigation supply (through September 23, 2013)



Partial data - Thru September 23, 2013

Service Month (nominal)	Initial	March	April	May	June	July	Aug	Sept	YTD
Meter Reads									
North Well	101380	0	390	5105	11361	17777	22781	1	
South Well	18163	18163	18163	23888	33756	44046	51469		
ECCV	37974	37974	37974	39816	41975	42565	42565	42565	
Aurora Potable	25297	25297	25297	25297	25297	25297	25297	25297	
kgal									
North Well		0	390	4,715	6,256	6,416	5,004	2,150	24,931
South Well		0	0	5,725	9,868	10,290	7,423	3,945	37,251
ECCV		0	0	1,842	2,159	590	0	0	4,591
Aurora Potable		0	0	0	0	0	0	0	0
Total - kgal		0	390	12,282	18,283	17,296	12,427	6,095	66,773
Total - af		0.0	1.2	37.7	56.1	53.1	38.1	18.7	204.9
COA Billing (2 months)									
North Well	\$0.00	\$0.00	\$163.80	\$1,980.30	\$2,627.52	\$2,694.72	\$2,101.68		\$9,568.02
South Well	\$0.00	\$0.00	\$0.00	\$2,404.50	\$4,144.56	\$4,321.80	\$3,117.66		\$13,988.52
ECCV	\$0.00	\$0.00	\$0.00	\$11,936.16	\$13,990.32	\$3,823.20	\$0.00		\$29,749.68
Aurora Potable	\$87.14	\$43.57	\$43.57	\$43.57	\$43.57	\$43.57	\$43.57		\$348.56
Total	\$87.14	\$43.57	\$207.37	\$16,364.53	\$20,805.97	\$10,883.29	\$5,262.91		\$53,567.64
Xcel Energy Billing (2 months)									
North Well	\$814.33	\$2,409.16	\$2,554.18	\$4,366.01	\$5,425.94	\$5,533.96	\$4,934.77		\$26,038.35
South Well	\$1,093.64	\$540.27	\$543.30	\$4,335.04	\$7,173.36	\$7,349.60	\$6,103.51		\$27,138.72
Total	\$1,907.97	\$2,949.43	\$3,097.48	\$8,701.05	\$12,599.30	\$12,883.56	\$11,038.28		\$51,269.10
Xcel \$/kgal (approx., some time lag)									
North Well			\$6.55	\$0.93	\$0.87	\$0.86	\$0.99		\$1.04
South Well				\$0.76	\$0.73	\$0.71	\$0.82		\$0.73
Combined			\$7.94	\$0.83	\$0.78	\$0.77	\$0.89		\$0.82
HOA Billing	\$22,000.00	\$22,000.00	\$23,006.20	\$53,687.56	\$69,170.14	\$66,623.68	\$54,061.66		\$310,549.24
Net to District	\$0.00	\$19,007.00	\$19,701.35	\$28,621.98	\$35,764.87	\$42,856.83	\$37,760.47		\$183,712.50
Credit towards ECCV SL	\$0.00	\$0.00	\$0.00	\$8,012.70	\$9,391.65	\$2,566.50	\$0.00		\$19,970.85